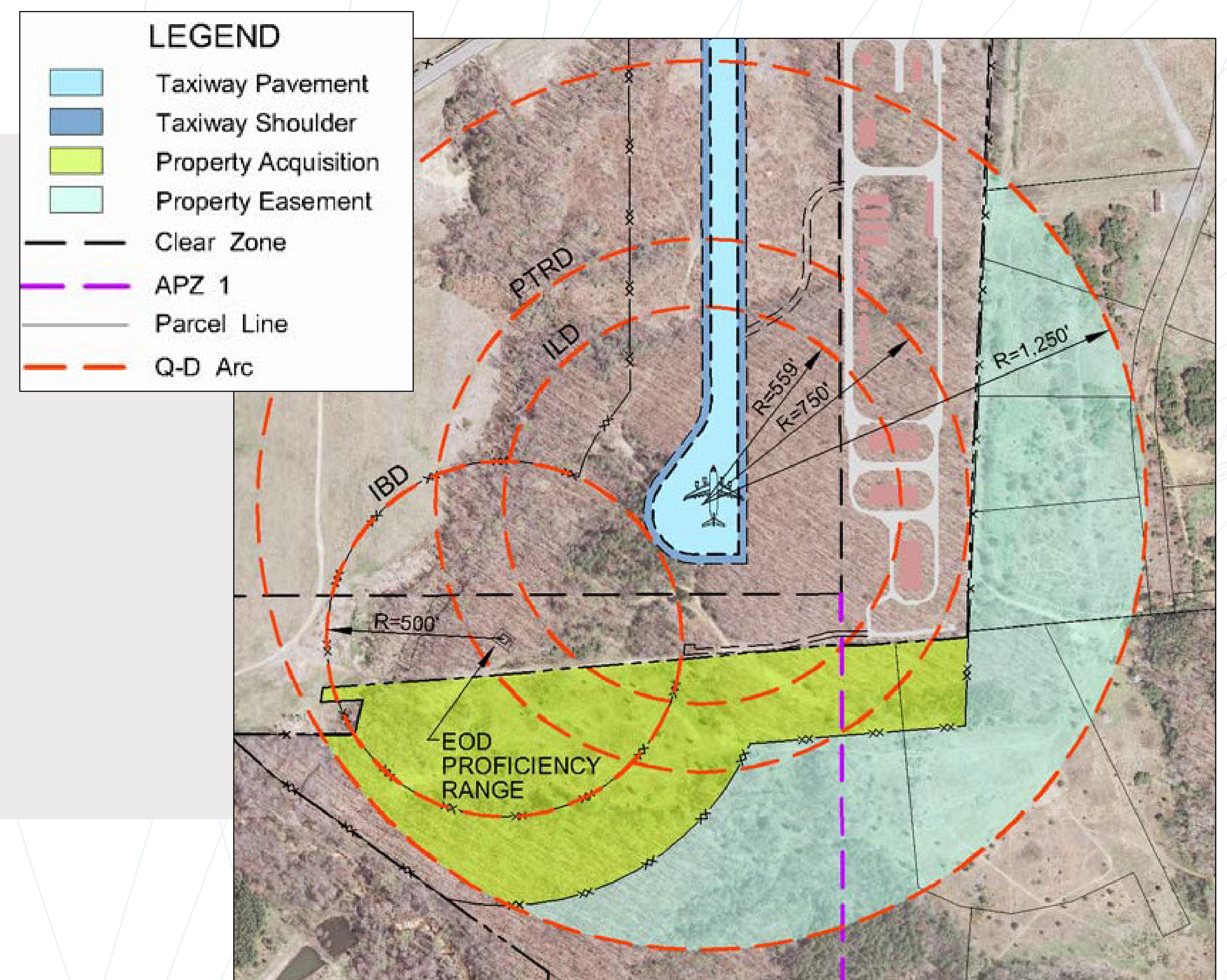
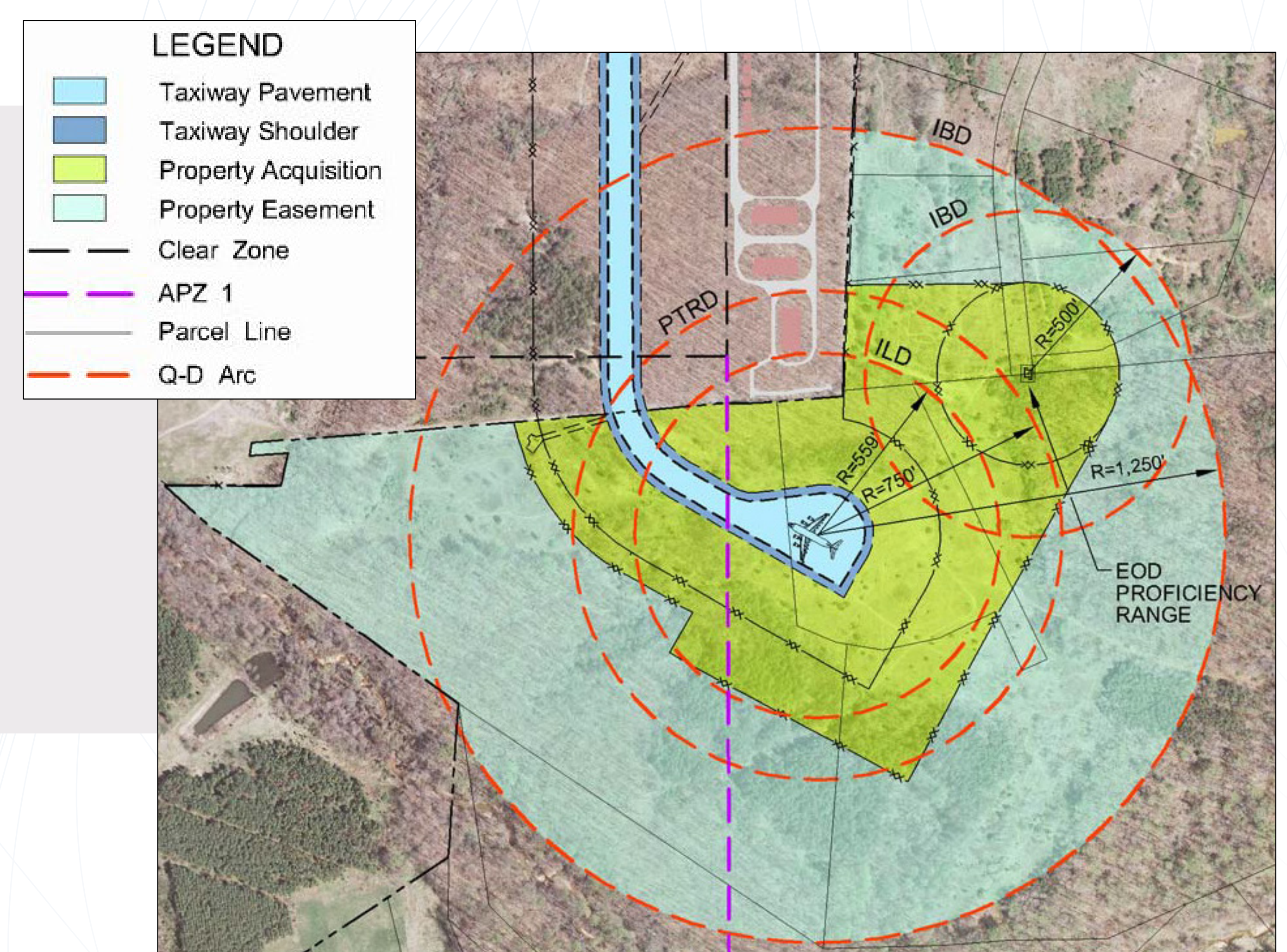


Hazardous Cargo Pad (HCP)

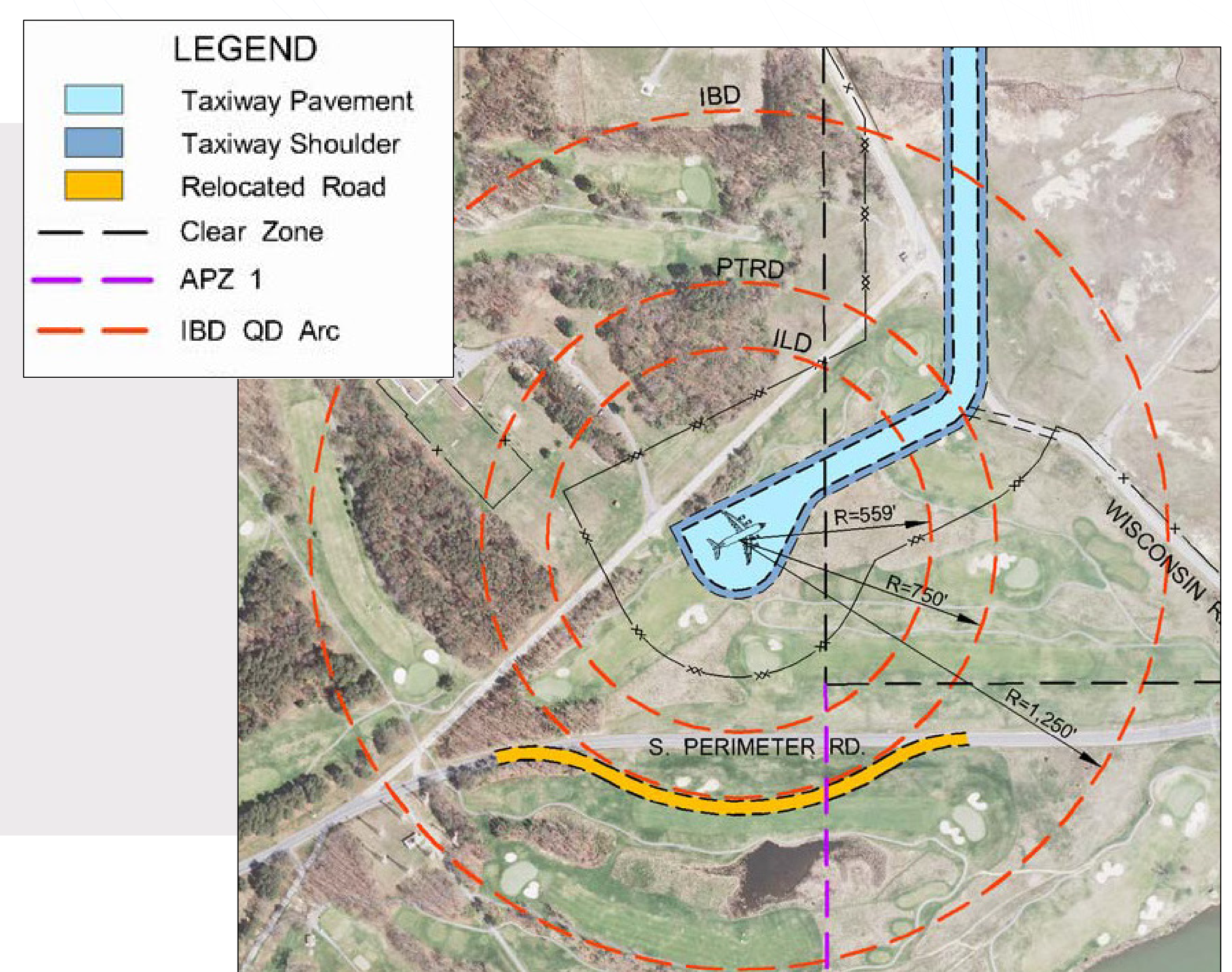
- **Southeast Option #1:** Explosives safety setbacks (i.e., Q-D arcs) encroach into adjacent property not currently owned by JBA, so land acquisition would be necessary. JBA would also have to acquire explosives safety and airfield criteria waivers for the HCP to operate in the airfield clear zone.



- **Southeast Option #2:** Avoids location in the clear zone but increases land acquisition needs. Two options for placement of associated EOD Proficiency Range: one in aircraft accident potential zone (APZ) and one outside base property (shown).



- **Southwest Option:** Places the HCP directly south of the proposed PAR Complex, overlapping five holes on the southern golf course. The EOD would be placed near the Munitions Storage Area (MSA) on base, but in a location that avoids the need for waivers or land acquisition.



- **Interim Option:** Places the HCP on Taxiway C between the east and west runways (not pictured).